

## Vintaj Swarovski Ring

### Required Supplies

Vintaj filigree brass bar  
12mm Swarovski cosmic shaped crystal  
24 gauge vintage brass wire (6 inches)  
Ring mandrel  
Wire cutters  
Needle nose pliers and round nose pliers

### Required Skills

Basic Wire Wrapping:

If you haven't learned basic wire wrapping, we teach this skill in our class *Introduction to Wire Wrapping*. You can also find instructions in our book, *Basic Beading the Bead World Way*, or on our website [www.beadworldinc.com](http://www.beadworldinc.com)



### Instructions

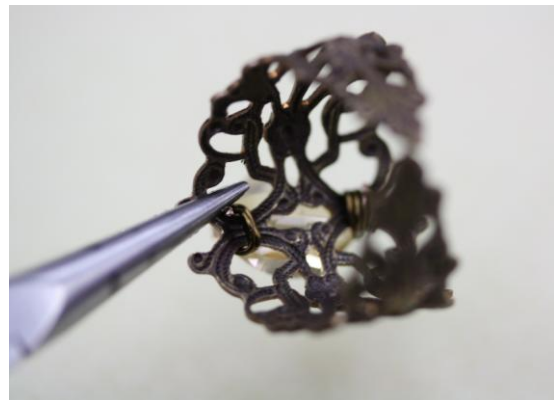
1. This adjustable ring is made from a flat filigree bar and a 12mm Swarovski crystal (as shown below left.) Hold the center of the filigree bar against the ring mandrel at the desired size and press the bar around the mandrel (as shown below right).



2. Wrap one end of your 24 gauge wire around the filigree in the center portion of the ring (as shown below left). Once you have secured the wire, string the Swarovski crystal onto the wire (as shown below right).



3. Wrap one end of your 24 gauge wire around the filigree in the center portion of the ring below the crystal (as shown below left). Cut off any excess wire. Use your needle nose pliers to tap down the end of the wire so it isn't sharp.



4. The finished ring is shown below.

